



# Specification

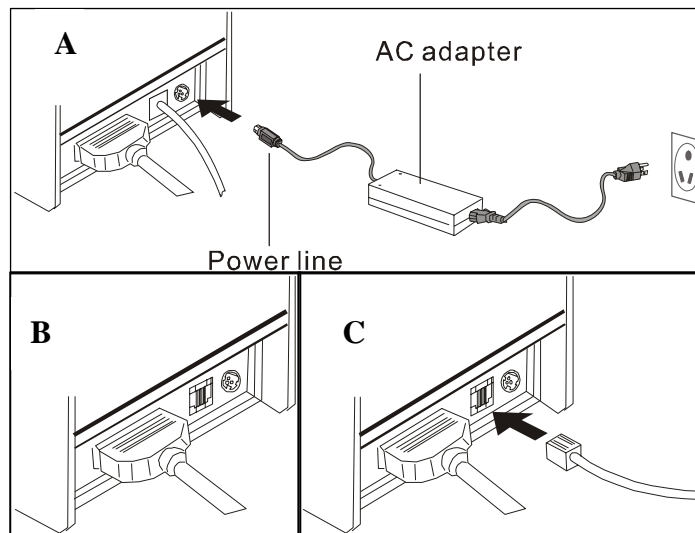
EC-7645 XX

IMPACT DOT-MATRIX RECEIPT PRINTER



### ***Connection***

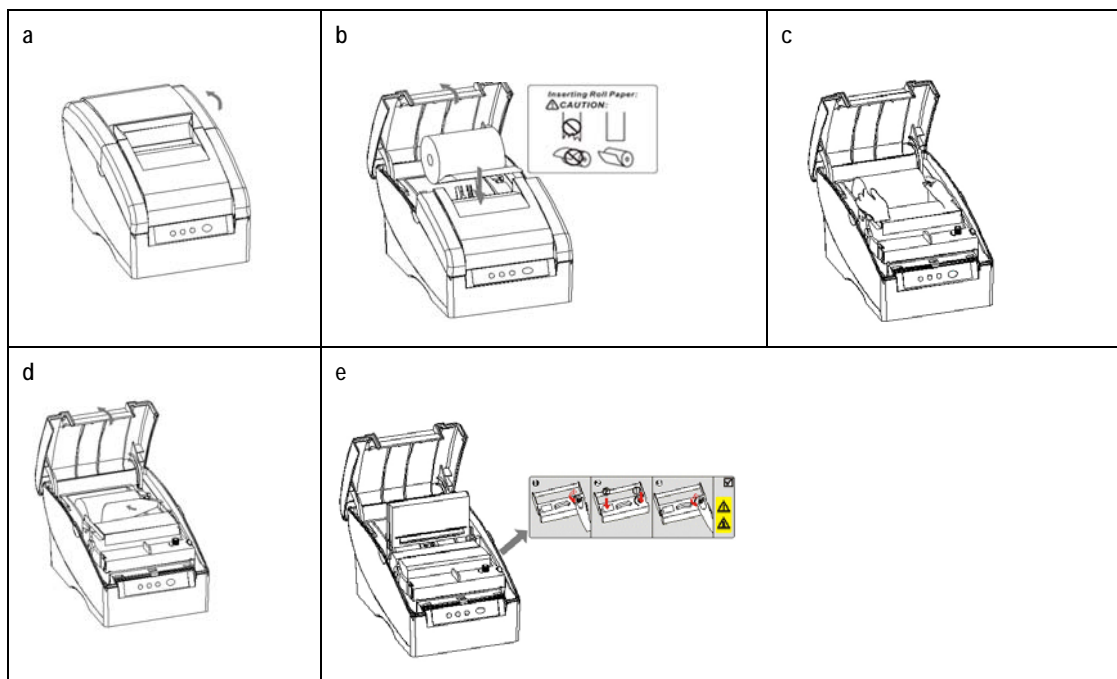
- a. Connect the adapter cable to power connector of the printer.
- b. Connect the interface cable to the connector on the rear panel of the printer.
- c. Connect the cash drawer's RJ-11 jack to the connector on the rear panel.



### ***Installation of Paper Roll and Ink Ribbon***

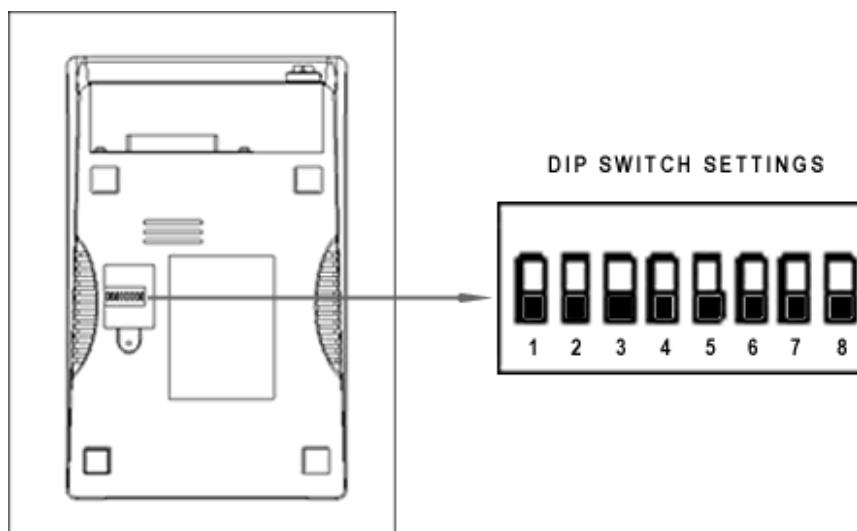
Please install after turn on the printer with indicators are on.

- a. Open the top cover
- b. Install the paper roll as the picture showing direction
- c. Insert the end of the bottom paper into the paper take-up spool; be sure that the paper is aligned with the spool's flange so that the paper is taken up by the spool.
- d. Cut redundant paper by the cutter.
- e. Open the printer's cover, turn the knob five or six times in the direction of the arrow, insert the ink ribbon, and push the ribbon cassette down until it clicks.



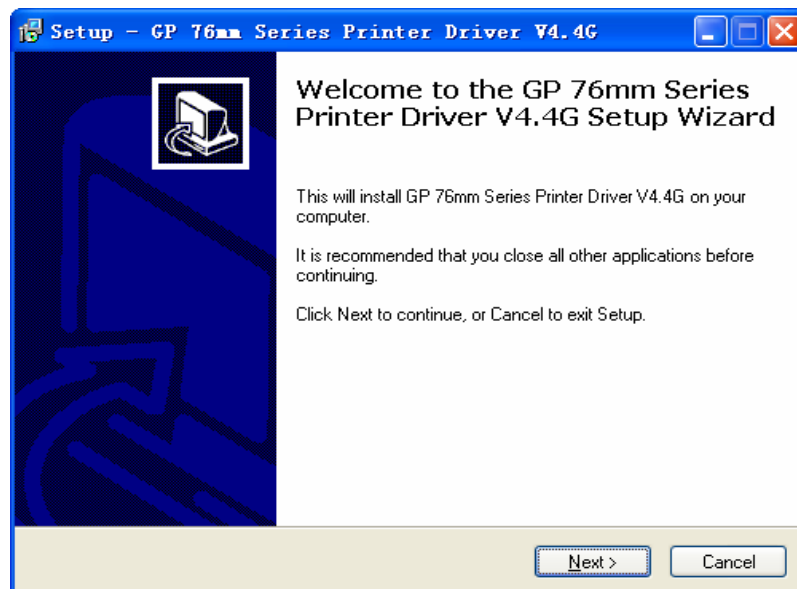
**Set Print Mode (DIP Switch)**

Set print mode by the DIP Switch, such as Black mark, Cutter, Language, Beep, Density, Speed mode

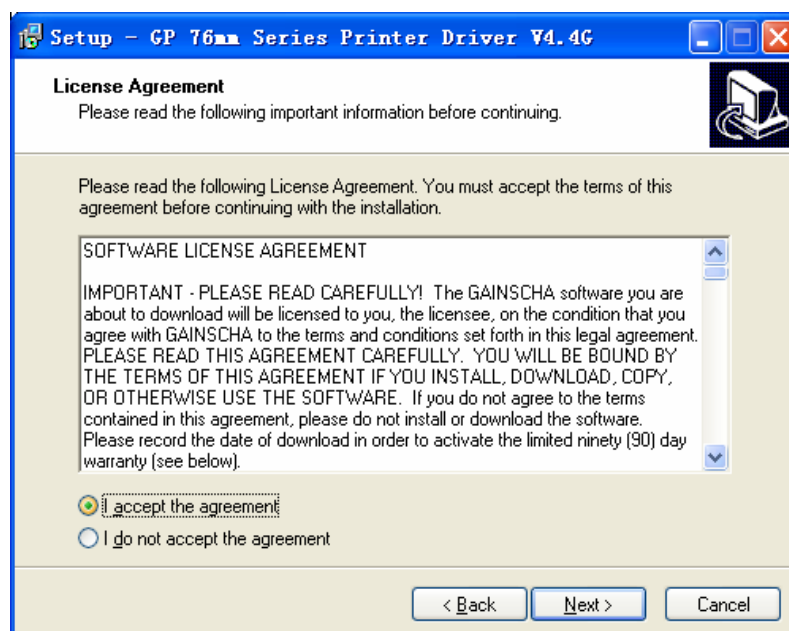


## Driver Installation

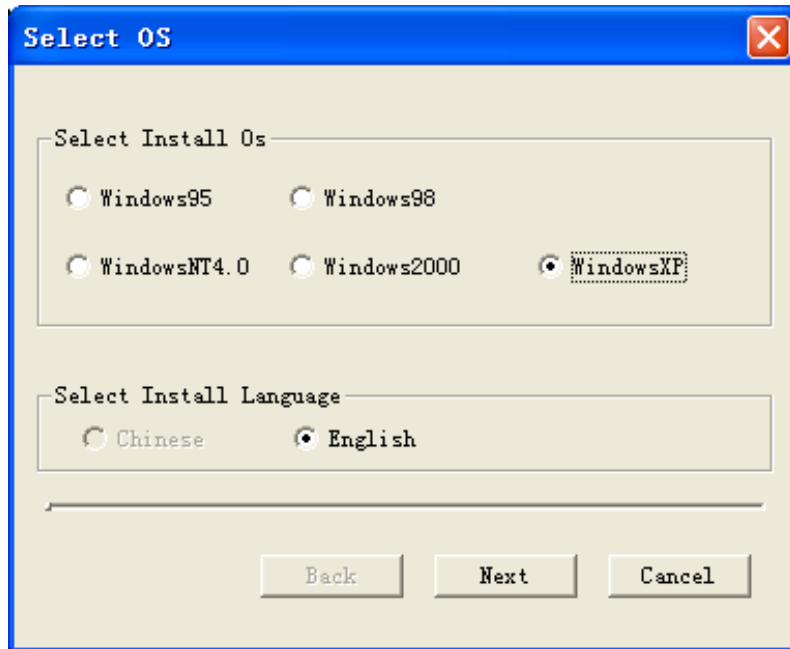
- a. Insert the bundled CD disk into the CD-ROM drive, in the CD-Rom menu, click DRV76EN V4.4G file to begin driver installation



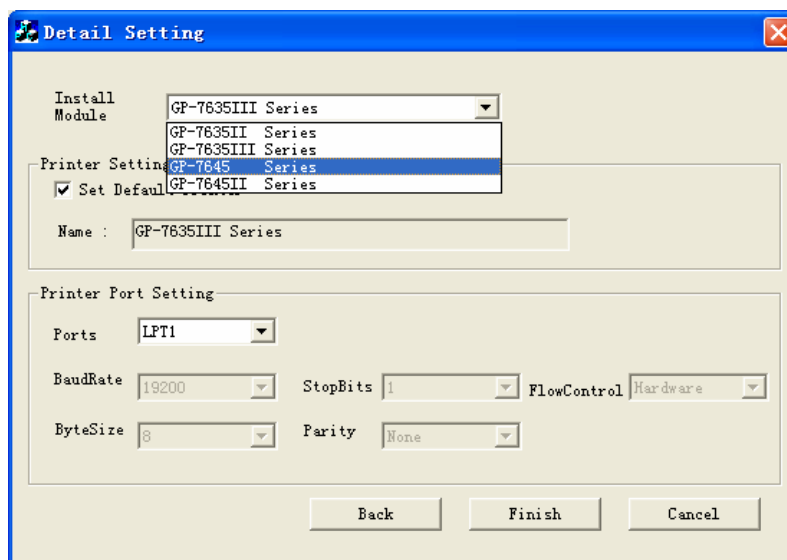
- b. Please read and accept the principle first, and then go on with installation.



c. Please choose the OS that matches with your computer system and press next.



d. Please select GP-7645II Series for Install module.





*Welcome to choose our "EC PRINTER"  
mini printers, if you have some questions  
and advices for our company, please  
contact with us directly or visit  
<http://www.eclineproducts.com>, we are  
ready to supply the best service for you!*